

# MIKS1 S

@ FemtoLux30

 EKSPLO

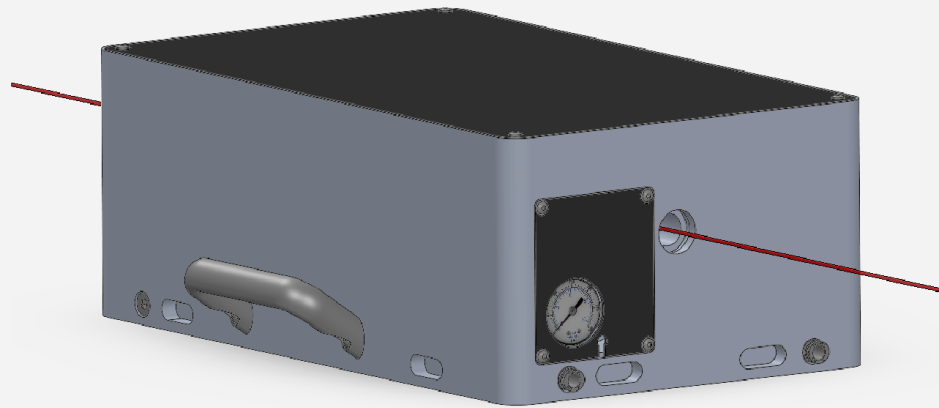


## PERFORMANCE

- Input FemtoLux30:
  - 350 fs, 100  $\mu$ J, 20 W
- Output MIKS1 S:
  - 50 fs, 90  $\mu$ J, 18 W
- ca. 7x peak power increase
- Over 90% efficiency

## FEATURES

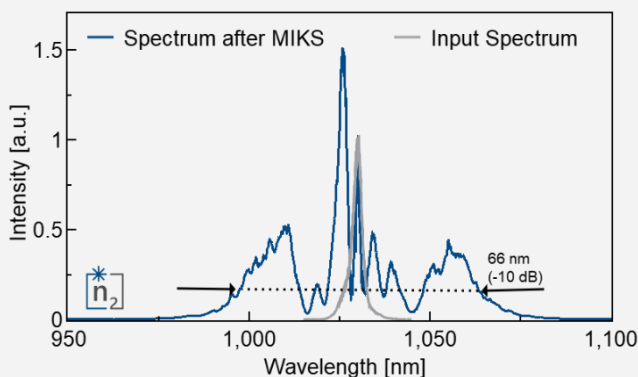
- 24/7 operation
- Low maintenance
- Small footprint: 36 x 25 cm<sup>2</sup>
- Beam height: 90 mm



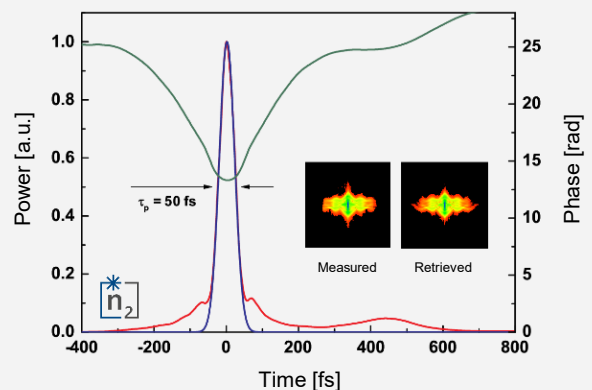
MIKS1 (Single-stage multipass pulse compressor) is a laser add-on which shortens the pulse duration. The system works at any repetition rate and can also be integrated with pulse-on-demand systems. The mechanical design is optimized for stable 24/7 operation in an industrial environment. All components, including beam steering and diagnostics are fully integrated in the compact, sealed monolithic enclosure, which allows simple integration in existing laser systems.

Together with the high-end laser system from EKSPLO, this results in a **turn-key solution for ultrashort laser pulses.**

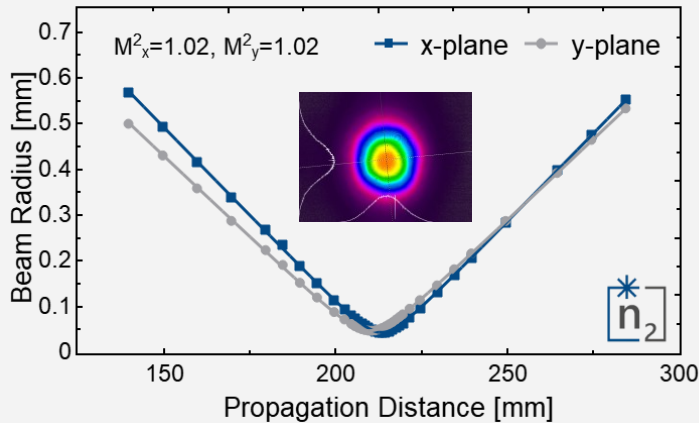
Typical output spectrum



Typical FROG trace



Typical output beam profile



Experimental setup



## SPECIFICATIONS

Versions	MIKS1S	MIKS1M	MIKS1L	MIKS12
Input energy	1 - 200 $\mu$ J	200 - 500 $\mu$ J	500 $\mu$ J - 3 mJ	50 - 300 $\mu$ J
Input pulse duration	200 fs - 3 ps			
Maximum average power	Up to 100 W (HP-version: >100 W)			
Compression factor	Up to 10 x			15 - 35 x
Efficiency	> 90 %			> 80 %
Output pulse duration	< 45 fs			< 10 fs
Beam positional stability	< 1 % of beam diameter			
Average power stability	< 0.5 % RMS			
Footprint	36 x 25 cm <sup>2</sup>	60 x 25 cm <sup>2</sup>	190 x 40 cm <sup>2</sup>	80 x 60 cm <sup>2</sup>



Contact us for further information or for customizing MIKS1 to your requirements!

Kilian Fritsch | +49 40 6077 3472 0 | kilian.fritsch@n2-photonics.de

